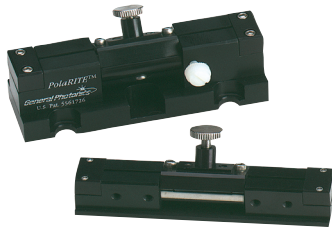


## Polarization Submodules

## Drop-in Polarization Controller – PolaRITE™



This is the in-line version of the PolaRITE™ polarization controller. It can be inserted into a fiber optic system to control the polarization state of light without having to disconnect any part of the system. It can be used by simply inserting a length of fiber into the slot located on top of the device. The miniature version can be inserted in even tighter spaces in a fiber optic module.

## Specifications:

Intrinsic Insertion Loss	< 0.05 dB
Return Loss	> 65 dB
Operating Wavelength	480 nm, 633 nm, 780 nm, 820 nm, 980 nm, 1064 nm, 1260 to 1650 nm
Extinction Ratio	> 40 dB
Operating Temperature	-40 to 85 °C
Storage Temperature	-40 to 85 °C
Dimensions	1.00" × 1.09" × 3.00" (W × H × L) (PLC-003) 0.50" × 0.84" × 3.00" (W × H × L) (PLC-006)

## Features:

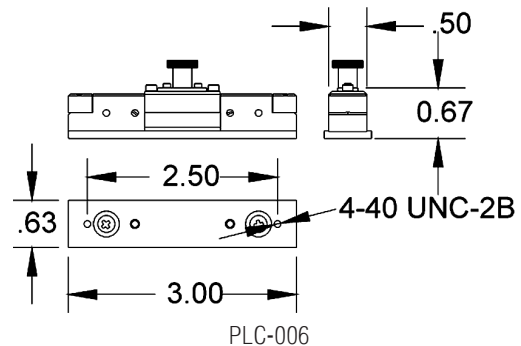
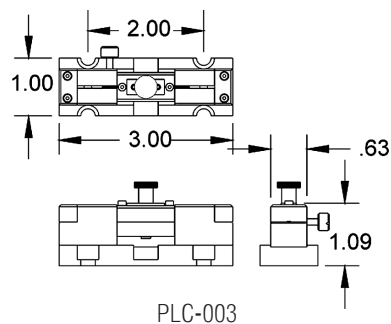
- Low Loss
- Low back reflection
- Compact
- Easy to connect
- Low cost
- Insensitive to wavelength variations
- Works with fibers of any size

## Applications:

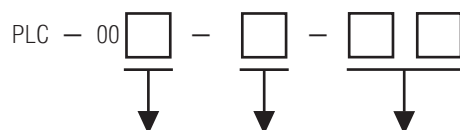
- High speed telecommunication systems
- WDM systems
- CATV systems
- Fiber laser
- Fiber sensor systems
- PM fiber systems
- Antenna remoting systems

Tech Info: pp. 95, 215  
App Note: p. 202

## Dimensions:



## Ordering Information:



- 3 = Lab. version  
6 = Miniature version
- S = Fiber clamp with screws  
M = Fiber clamp with magnets
- 25 = 250 μm jacket  
90 = 900 μm jacket

See page 59 for fully connectorized polarization controller, page 57 for pigtailed polarization controller

Notes:  
PLC-006 has no 900 μm jacket option  
Magnet clamp available only for PLC-003 for 250μm fiber