

# SuperK COMPACT

Compact single mode white light source

- Cost efficient broadband source
- High brightness and long lifetime
- Visible to IR light in one module
- Input pulse trigger
- Variable repetition rate
- Flexible accessory range
- Alternative to ASE sources, lamps and SLDs



## Applications

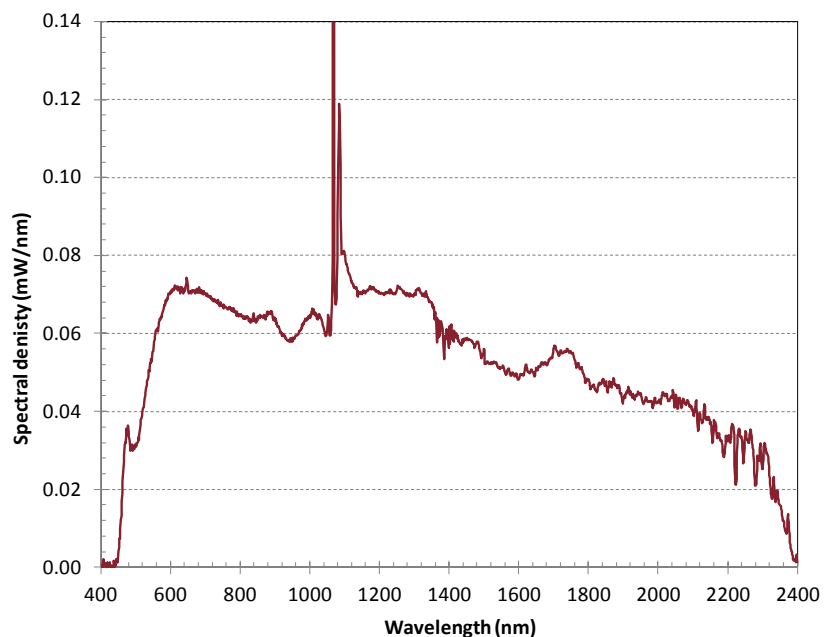
- ASE source alternative
- Fiber and grating characterization
- CWDM/DWDM Component test
- Spectroscopy
- OCT
- 3D-displacement systems

The new SuperK COMPACT is a cost efficient turn-key supercontinuum white light source with a wide output spectrum that covers the entire 450-2400 nm region. The output is single mode with a brightness many orders of magnitude larger than that of other white light sources like incandescent lamps and with far more bandwidth than ASE sources or SLEDs.

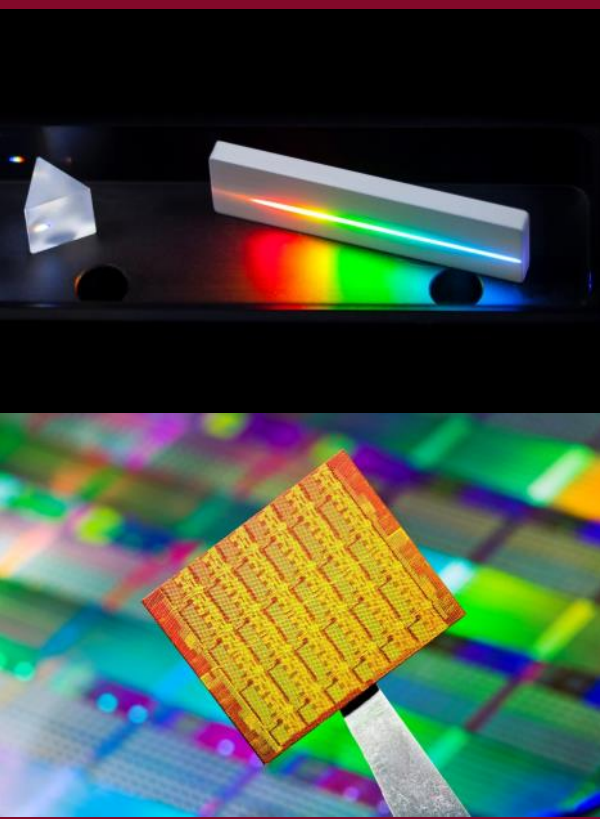
The light is delivered in a single mode fiber terminated with either a standard FC/PC connector or our high quality collimator.

The SuperK COMPACT easily interfaces with the SuperK SPLIT and SuperK CONNECT fiber delivery accessory range, for easy delivery and filtering/splitting of the light.

The SuperK COMPACT can be found in laboratories around the World where it is the daily driver for many users within applications like component characterization, test & measurement, spectroscopy and OCT or simply as a general purpose laboratory white light source.



Typical output spectrum from the SuperK COMPACT



## Specifications

### Optical

Optical Spectral Range	450-2400 nm
Total output power	> 110 mW
Total VIS power (450-850 nm)	> 25 mW
Output power stability (1 hour)	± 2.0 %
Repetition rate	Variable 1 Hz to minimum 20 kHz
Output pulse width	< 2 ns
Pulse-pulse jitter (Std. Dev.)	< 2 μs (rep rate dependent)
Output fiber	Single mode
Output termination	Collimator, FC/PC or FC/APC connector
Beam diameter (collimated)	~1mm at 530nm ~2mm at 1100nm ~3mm at 2000nm
M <sup>2</sup>	≤ 1.1
Polarization	Unpolarized
Beam output	Gaussian, single mode

### Mechanical/Electrical

Operation Voltage	100-240 V; 50-60 Hz
Power consumption	< 40 W
Computer interface	USB
Pulse signal output	Analog and digital
Trigger input	Standard and industrial (galvanically isolated)
Interlock connector	2-pin LEMO 0B
External bus connector	15-pin sub-D
System cooling	Air cooled
Dimensions (H x W x D)	93 x 221 x 332 mm
Weight	3.8 kg

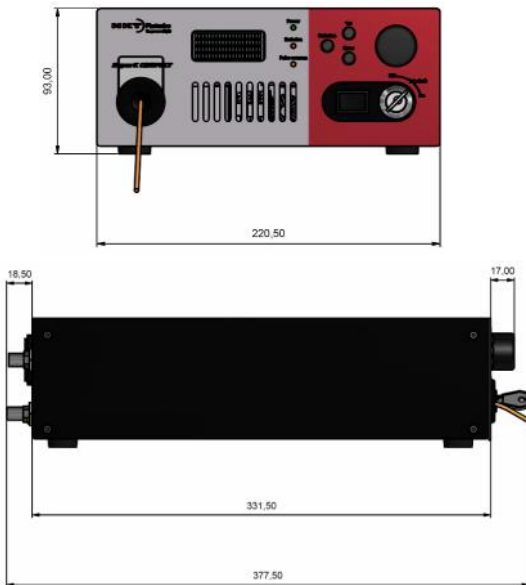
### Environmental

Operating temperature range	15-30 °C
Storage temperature range	5-50 °C (non condensing)
Humidity	20-80 % RH

All NKT Photonics products are produced under our quality management system certified in accordance with the ISO 9001:2008 standard.



SuperK\_COMPACT\_141217



## Other white light lasers

### SuperK EXTREME

Turn-key high-power supercontinuum laser system with industry leading brightness covering the entire 400-2400nm wavelength range. Used globally in a wide range of applications like Fluorescence Lifetime Imaging (FLIM), Optical Coherence Tomography (OCT), Time Correlated Single Photon Counting (TCSPC), Flow cytometry, DNA sequencing, White Light Interferometry (WLI), Test and Measurement and many others.



**NKT Photonics A/S (Headquarters)**  
Blokken 84, 3460 Birkerød, Denmark  
Phone: +45 4348 3900  
Fax: +45 4348 3901

**NKT Photonics GmbH**  
Schanzenstrasse 39, Bldg D9-D13  
51063 Cologne, Germany  
Phone: +49 221 99511-0  
Fax: +49 221 99511-650

**NKT Photonics Inc.**  
1400 Campus Drive West  
Morganville NJ 07751, USA  
Phone: +1 732 972 9937  
Fax: +1 732 414 4094